



# HP EliteDesk 800 G2 Small Form Factor PC

Experience top-notch productivity plus industry-leading reliability, security, and manageability, plus a unique portfolio of solutions in a compact, space-saving design with the powerful HP EliteDesk 800 SFF.



HP recommends Windows 10 Pro.

- Windows 10 Pro<sup>1</sup>
- 6th Gen Intel® Core™ Processors<sup>2</sup>

## Designed for every demand

- Blast through your most demanding challenges with the uncompromising performance of 6th Gen Intel® Core™ processors,<sup>2</sup> Intel® HD 530 Graphics, and optional high-end discrete graphics and HP Turbo Drive.<sup>3</sup>

## Seriously secure

- Help protect your PC and maintain maximum uptime with a suite of solutions that help stop security breaches, including HP BIOSphere<sup>4</sup> with SureStart.

## Make durability a reality

- Get the reassurance of a PC that goes through 120,000 hours of HP Total Test Process and is designed to pass MIL-STD testing.<sup>5</sup> Add an optional Dust Management Solution for enhanced reliability in dusty environments.

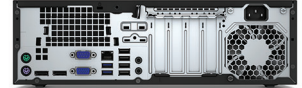
## Expand with ease

- Extend the life of your investment with a tool-less chassis and a range of expansion slots, bays, ports, and connectors for the most demanding business needs.

## Featuring

- Help secure the future of your modern business. Modern PCs from HP make the most of Windows 10 Pro<sup>1</sup> to help protect you from today's security threats and maximize management and productivity features for business.
- Enjoy easy world-class manageability with integrated solutions that include Intel® vPro™<sup>6</sup> and Windows 10 Pro<sup>1</sup> plus HP Common Core BIOS, which enables easy management of your entire fleet of HP devices.
- Simplify IT rollouts and stagger deployments with an 18-month lifecycle and global availability in more than 180 countries where HP conducts business.
- Make conferencing from your PC as simple as the touch of a button with the optional HP Conferencing Keyboard and HP Wired Headset.<sup>3</sup>
- Keep everything in plain sight and be up to 35%<sup>8</sup> more productive with support for up to three external HP EliteDisplays.<sup>3</sup>
- Support your environmental initiatives with energy-efficient PCs that are ENERGY STAR® certified and EPEAT® Gold<sup>9</sup> registered.
- Increase storage and performance with an optional powerful HP Turbo Drive<sup>3</sup> that handles your growing and complex workloads.
- Cut costs, preserve your precious time, and focus on your core competencies with HP Configuration and Deployment Services that bring you fast, accurate, and globally standardized IT solutions.

## HP EliteDesk 800 G2 Small Form Factor PC Specifications Table



<b>Form Factor</b>	Small Form Factor
<b>Available Operating System</b>	Windows 10 Pro 64 – HP recommends Windows 10 Pro. <sup>1</sup> Windows 10 Home 64 <sup>1</sup> Windows 8.1 Pro 64 <sup>1</sup> Windows 8.1 64 <sup>1</sup> Windows 7 Professional 64 (available through downgrade rights from Windows 10 Pro) <sup>2</sup> Windows 7 Professional 32 (available through downgrade rights from Windows 10 Pro) <sup>2</sup> Windows 7 Professional 64 <sup>1</sup> Windows 7 Professional 32 <sup>1</sup> FreeDOS 2.0
<b>Available Processors <sup>3</sup></b>	Intel® Core™ i7-6700 with Intel HD Graphics 530 (3.4 GHz, up to 4 GHz with Intel Turbo Boost, 8 MB cache, 4 cores); Intel® Core™ i5-6600 with Intel HD Graphics 530 (3.3 GHz, up to 3.9 GHz with Intel Turbo Boost, 6 MB cache, 4 cores); Intel® Core™ i5-6500 with Intel HD Graphics 530 (3.2 GHz, up to 3.6 GHz with Intel Turbo Boost, 6 MB cache, 4 cores); Intel® Core™ i3-6320 with Intel HD Graphics 530 (3.9 GHz, 4 MB cache, 2 cores); Intel® Core™ i3-6300 with Intel HD Graphics 530 (3.8 GHz, 4 MB cache, 2 cores); Intel® Core™ i3-6100 with Intel HD Graphics 530 (3.7 GHz, 3 MB cache, 2 cores); Intel® Pentium® G4520 with Intel HD Graphics 530 (3.6 GHz, 3 MB cache, 2 cores); Intel® Pentium® G4400 with Intel HD Graphics 510 (3.3 GHz, 3 MB cache, 2 cores)
<b>Chipset</b>	Intel® Q170
<b>Maximum Memory</b>	64 GB DDR4-2133 SDRAM Transfer rates up to 2133 MT/s
<b>Memory Slots</b>	4 DIMM
<b>Internal Storage</b>	120 GB up to 256 GB SATA SSD <sup>4</sup> 120 GB up to 256 GB SATA SED SSD <sup>4</sup> 500 GB (8 GB cache) up to 1 TB (8 GB cache) SATA SSHD <sup>4</sup> 128 GB up to 512 GB Turbo Drive G2 (M.2 PCIe SSD) <sup>4</sup> 128 GB up to 256 GB Turbo Drive (M.2 PCIe SSD) <sup>4</sup> 500 GB 128 GB up to 512 GB SATA 3D SSD <sup>4</sup>
<b>Optical Drive</b>	Slim SATA BDXL Blu-ray writer; Slim SATA DVD-ROM; Slim SATA DVD-Writer <sup>5,6</sup>
<b>Available Graphics</b>	Integrated: Intel® HD Graphics <sup>8</sup> Discrete: NVIDIA® GeForce® GT 730 (2 GB) (Integrated graphics will depend on processor)
<b>Audio</b>	DTS Studio Sound™ audio management technology, HD audio with Realtek ALC221 codec, microphone and headphone front ports (3.5 mm), line-out and line-in rear ports (3.5 mm), multi-streaming capable, internal speaker (standard)
<b>Expansion Slots</b>	1 low-profile PCIe x16; 1 low-profile PCIe x4 (x16); 2 low-profile PCIe x1
<b>Ports and Connectors</b>	Front: 2 USB 3.0; 2 USB 2.0 (1 fast charging); 1 headphone connector; 1 headphone/microphone Back: 6 USB 3.0; 1 serial; 1 serial (optional); 1 parallel (optional); 2 PS/2 (keyboard and mouse); 1 VGA; 2 DisplayPort; 1 audio line in; 1 audio line out; 1 RJ-45
<b>Input Devices</b>	HP PS/2 Business Slim Keyboard; HP PS/2 Keyboard; HP USB and PS/2 Washable Keyboard; HP USB Antimicrobial Keyboard; HP USB Business Slim Keyboard; HP USB Conferencing Keyboard; HP Wireless Business Slim Keyboard and Mouse Combo <sup>9</sup> HP PS/2 Mouse; HP USB Mouse; HP USB 1000 dpi Laser Mouse; HP USB and PS/2 Washable Mouse; HP USB Antimicrobial Mouse; HP USB Hardened Mouse <sup>9</sup>
<b>Communications</b>	: Intel® I219LM Gigabit Network Connection LOM; Intel® I210-T1 PCIe GbE (optional) WLAN: Broadcom BCM943228Z 802.11n Wireless PCIe with Bluetooth®; Broadcom BCM943228Z 802.11n Wireless PCIe; Intel® 7265 802.11ac Wireless PCIe with Bluetooth®; Intel® 7265 802.11n wireless PCIe; Intel® 8260 802.11ac Wireless PCIe Bluetooth®; Intel® 8260 802.11ac Wireless PCIe <sup>7</sup>
<b>Drive Bays</b>	One slim ODD; One SD 4 card reader (optional); Two 3.5"; One 2.5"
<b>Available Software</b>	HP business PCs are shipped with a variety of software titles including: HP Client Security, HP Security Manager, Microsoft Security Essentials, CyberLink Power2Go, Native Miracast Support, HP ePrint Driver, HP Recovery Manager, Foxit PhantomPDF Express. Please refer to this product's quick spec document for a full list of preinstalled software. <sup>10,11,12</sup>
<b>Security Management</b>	HP BIOSphere with Sure Start; Trusted Platform Module, SLB9670TT1.2FW4.40 (TPM) 1.2 (Common Criteria EAL4+ certified), field upgradeable to 2.0; SATA port disablement (via BIOS); Drive lock; RAID (available as a configurable option); Intel® Identity Protection Technology (IPT); Serial, parallel, USB enable/disable (via BIOS); Optional USB port disable at factory (user configurable via BIOS); Removable media write/boot control; Power-on password (via BIOS); Setup password (via BIOS); HP Solenoid Hood Lock/Sensor; Support for chassis padlocks and cable lock devices <sup>13,14</sup>
<b>Management Features</b>	Intel® vPro™
<b>Power</b>	200 W, up to 92% efficient, active PFC; 200 W, 70% efficiency at full load, active PFC
<b>Dimensions</b>	33.9 x 37.9 x 10 cm
<b>Weight</b>	Starting at 7.6 kg (Exact weight depends on configuration)

## HP EliteDesk 800 G2 Small Form Factor PC

### Recommended Accessories and Services

---

#### HP Integrated Work Center 3 for Small Form Factor

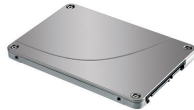


Maximize your work space with the HP Integrated Work Center for Small Form Factors v3. Customize an “all-in-one” solution by combining an HP Small Form Factor or Workstation with an LED monitor up to 24 diagonal inches.

**Product number: F2P06AA**

---

#### HP 128 GB SED Opal2 Solid State Drive



Get fast boot-up time, file searches, and application starts, and less downtime and power usage with the HP 128 GB SED Opal 2 Solid State Drive.<sup>1,2</sup>

**Product number: G1K24AA**

---

#### HP Wireless Keyboard and Mouse



The HP Wireless Keyboard and Mouse places advanced functionality and ease of operation at your fingertips. Stop hiding wires and regain a clutter-free work space with a cordless keyboard, cordless laser mouse and USB wireless receiver in a single package – built with the environment in mind.

**Product number: QY449AA**

---

#### HP 3-year Next Business Day Onsite Optional Customer Self Repair Desktop/Workstation Only Hardware Service



Receive 3 years of next business day onsite repair from an HP-qualified technician for your computing device, if the issue cannot be solved remotely. For more information on Care Pack services, please visit [www.hp.com/go/cpc](http://www.hp.com/go/cpc).

**Product number: UE379E**

---

## Messaging Footnotes

- <sup>1</sup> Not all features are available in all editions or versions of Windows. Systems may require upgraded and/or separately purchased hardware, drivers, software or BIOS update to take full advantage of Windows functionality. Windows 10 is automatically updated, which is always enabled. ISP fees may apply and additional requirements may apply over time for updates. See <http://www.microsoft.com>.
- <sup>2</sup> Multi-Core is designed to improve performance of certain software products. Not all customers or software applications will necessarily benefit from use of this technology. 64-bit computing system required. Performance will vary depending on your hardware and software configurations. Intel's numbering is not a measurement of higher performance.
- <sup>3</sup> Sold separately or available as a configurable option.
- <sup>4</sup> HP BIOSphere features may vary depending on the PC platform & configuration.
- <sup>5</sup> MIL-STD testing is pending and is not intended to demonstrate fitness for U.S. Department of Defense contract requirements or for military use. Test results are not a guarantee of future performance under these test conditions. Accidental damage or damage under the MIL STD test conditions requires an optional HP Accidental Damage Protection Care Pack.
- <sup>6</sup> Some functionality of vPro, such as Intel® Active Management Technology and Intel Virtualization Technology, requires additional third party software in order to run. Availability of future "virtual appliances" applications for Intel vPro technology is dependent on third party software providers. Microsoft Windows required.
- <sup>8</sup> "Observed Productivity, Efficiency and User Satisfaction when Using Multiple or Large Displays," Koala LLC Ergonomics Consulting, November 6, 2012.
- <sup>9</sup> EPEAT® Gold registered where applicable. EPEAT registration varies by country. See [www.epeat.net](http://www.epeat.net) for registration status by country.

## Technical Specifications Footnotes

- <sup>1</sup> Not all features are available in all editions or versions of Windows. Systems may require upgraded and/or separately purchased hardware, drivers, software or BIOS update to take full advantage of Windows functionality. Windows 10 is automatically updated, which is always enabled. ISP fees may apply and additional requirements may apply over time for updates. See <http://www.microsoft.com>.
- <sup>2</sup> This system is preinstalled with Windows 7 Professional software and also comes with a license and media for Windows 10 Pro software. You may only use one version of the Windows software at a time. Switching between versions will require you to uninstall one version and install the other version. You must back up all data (files, photos, etc.) before uninstalling and installing operating systems to avoid loss of your data.
- <sup>3</sup> Multicore is designed to improve performance of certain software products. Not all customers or software applications will necessarily benefit from use of this technology. Performance and clock frequency will vary depending on application workload and your hardware and software configurations. Intel's numbering is not a measurement of higher performance.
- <sup>4</sup> For storage drives, GB = 1 billion bytes, TB = 1 trillion bytes. Actual formatted capacity is less. Up to 16 GB (for Windows 7) and up to 36 GB (for Windows 8.1 and 10) of system disk is reserved for system recovery software.
- <sup>5</sup> Duplication of copyrighted material is strictly prohibited. Actual speeds may vary. Double Layer media compatibility will widely vary with some home DVD players and DVD-ROM drives. Note that DVD-RAM cannot read or write to 2.6GB Single Sided/5.2 Double Sided-Version 1.0 Media.
- <sup>6</sup> With Blu-Ray drive XL, certain disc, digital connection, compatibility and performance issues may arise, and do not constitute defects in the product. Flawless playback on all systems is not guaranteed. In order for some Blu-ray titles to play, they may require an HDCP path and HDCP display. HD-DVD movies cannot be played on this BDXL Drive.
- <sup>7</sup> Wireless cards are optional or add-on features and requires separately purchased wireless access point and internet service. Availability of public wireless access points limited. The specifications for the 802.11ac WLAN are draft specifications and are not final. If the final specifications differ from the draft specifications, it may affect the ability of this desktop PC to communicate with other 802.11ac WLAN devices.
- <sup>8</sup> HD content required to view HD images.
- <sup>9</sup> Optional or add-on feature.
- <sup>10</sup> HP ePrint requires an Internet connection to HP web-enabled printer and HP ePrint account registration (for a list of eligible printers, supported documents and image types and other HP ePrint details, see [www.hp.com/go/businessmobileprinting](http://www.hp.com/go/businessmobileprinting)). HP PageLift requires Windows 7 or higher.
- <sup>11</sup> Microsoft Security Essentials requires Windows 7 and internet access.
- <sup>12</sup> Miracast is a wireless technology your PC can use to project your screen to TVs, projectors, and streaming media players that also support Miracast. You can use Miracast to share what you're doing on your PC and present a slide show. Miracast is available for Windows 8 and Windows 10. For more information: <http://windows.microsoft.com/en-us/windows-8/project-wireless-screen-miracast>.
- <sup>13</sup> HP BIOSphere with Sure Start available only on business PCs with HP BIOS.
- <sup>14</sup> This product ships with TPM 1.2 with option to upgrade to TPM 2.0. Upgrade utility is expected to be available by the end of 2015 via HP Customer Support.
- <sup>15</sup> EPEAT® registered where applicable. EPEAT registration varies by country. See [www.epeat.net](http://www.epeat.net) for registration status by country.
- <sup>16</sup> External power supplies, power cords, cables and peripherals are not low halogen. Service parts obtained after purchase may not be low halogen.

**Sign up for updates**  
[hp.com/go/getupdated](http://hp.com/go/getupdated)

© Copyright 2015 HP Development Company, L.P. The information contained herein is subject to change without notice. The only warranties for HP products and services are set forth in the express warranty statements accompanying such products and services. Nothing herein should be construed as constituting an additional warranty. HP shall not be liable for technical or editorial errors or omissions contained herein.

ENERGY STAR and the ENERGY STAR mark are registered trademarks owned by the U.S. Environmental Protection Agency. Bluetooth is a trademark of its proprietor used by Hewlett-Packard Company under license. Microsoft and Windows are U.S. trademarks of the Microsoft group of companies. Intel and Core are trademarks of Intel Corporation in the U.S. and other countries. Linux® is the registered trademark of Linus Torvalds in the U.S. and other countries. For DTS patents, see <http://patents.dts.com>. Manufactured under license from DTS Licensing Limited. DTS, the Symbol, & DTS and the Symbol together are registered trademarks, and DTS Studio Sound is a trademark of DTS, Inc. © DTS, Inc. All Rights Reserved. All other trademarks are the property of their respective owners.

